

MISSISSIPPI FEDERATION OF MUSIC CLUBS CALENDAR OF EVENTS 2010 -2011

November 1 - 30, 2010	AMERICAN MUSIC MONTH	
November 1, 2010	SENIOR CLUB TREASURER'S REPORT DUE	
December 1, 2010	JUNIOR CLUB TREASURER'S REPORT DUE	
January 1 - 31, 2011	FESTIVAL CUP Fees to MFMC Festival Cup Chairman	
February 5, 2011	Bach Festival	Hinds Community College Raymond
February 5, 2011	District VI C Festival	Corinth
February 19, 2011	District VI A and B Festival	Tupelo
February 19, 2011	District II A Festival	Philadelphia
February 19, 2011	District III Festival	Hattiesburg
February 26, 2011	District IV B Festival	Clinton
February 26, 2011	District I Festival	Columbus
March 4, 2011	District II B Festival	Meridian
March 5, 2011	District IV A Festival	Canton
March 5, 2011	District V Festival	Belzoni
TBA	District VIII Festival	Carriere
March 5, 2011	State Student Auditions	Hinds Community College Raymond
April 16, 2011	MFMC Junior Division Convention Canton	
April 29 - 30, 2011	MFMC Senior Convention Philadelphia	
May 1- 8, 2011	National Music Week Theme: "Music . . . an Instrument of Universal Expression"	
June 6 - 12, 2011	2011 NFMC Biennial Convention Hilton McLean Tysons Corner Hotel - McLean, VA	
June 12 - 18, 2011	Piano Discoveries Camp, University of Mississippi, Oxford	
July 3 - 9, 2011	Music Camp at Mississippi College, Clinton	
July 8 - 10, 2011	NFMC Southeastern Brevard Music Center Weekend MFMC President's Theme for 2009 - 2011 <i>"Mission Music: Let Every Note Be Heard"</i>	

President's Message —



Ann Kay
President

Thank you for all you do.
Thank you for all you do for the Mississippi Federation of Music Clubs. Without you, this organization would not exist. Without your hard work, this organization would not be able to accomplish all that it does or provide the benefits and services to its members and junior members that they currently enjoy.

I appreciate your hard work and dedication to the organization and its goals. I appreciate the time and effort that you devote to attending your monthly meetings with your local organization, volunteering to help with Festival, serving in your respective roles and attending board meetings and conventions.

Thank you for your wonderful support during the State Convention. We had quite a storm, but that did not deter our enthusiasm or detract from our wonderful presentations and performances. I also appreciate the hard work of our Junior Counselors. They made a wise decision to cancel the Junior Club activities at the Convention and rescheduled for their own celebration in Canton. I know it was a lot of extra work, but it was the prudent thing to do. Our Junior Members had a great time in Canton and seem to thrive in having their own gathering.

Several of us enjoyed the national convention held recently in Pittsburgh. During the convention, Mississippi was recognized as being one of the five most active states. This is quite an accomplishment! You all deserve a pat on the back and a round of applause for achieving this honor. The activities recognized do not just happen; you made them happen. Thank you again

for your hard work and dedication to the Federation.

Now is not the time to rest.

However, now is not the time to rest on our laurels. While much has been accomplished, there is still much work to be done. One crucial element that enables us to complete our projects successfully is communication. We must communicate. Electronic communication is by far the most economical and quickest way for us to transmit information to one another. I know some of you do not use a computer and do not receive email. I certainly understand. I was a late adopter of this kind of technology, but I can tell you it is well worth learning a few new skills to save this much time and money!

Some of our members may have email addresses but are not receiving email from the Federation because it is not listed in the yearbook and this is how we compile our mailing list. I ask each president to be sure that your Yearbook Chairman includes an email address for everyone that has one in the yearbook. Due to budget constraints, we will only send the Mockingbird Memo electronically unless a special request is made to receive it by regular mail.

We must also report our activities. There were many wonderful activities and programs that were reported at State Convention in Columbus, but some of those were not reported at the national convention in Pittsburgh. We definitely do not want to hide our light under a bushel basket! We want to let it shine! I am so proud of all of you and your accomplishments. I want all the other states to know about them as well.

We must change and adapt to grow.

It is easy to prefer to keep doing things the way we always have when we have been members of this organization for so long. However, we must change and adapt if we are to grow. We must understand that this is a time of transition and that everything goes through a time of

transition. We think of Robert's Rules of Order as being set in stone for many, many years, but even that changes with time. A new edition will be coming out soon that is reflective of the current time while retaining its core traditions.

Clarity of purpose

Any organization succeeds when it has a clear direction, achievable goals and good leadership. In the Mississippi Federation of Music Clubs, we must retain our clarity of purpose, even if the national organization's goals seem cloudy to us. We must remember that our mission is music and to bring the joy of music to our children and our communities. When the heart is stirred by a wonderful live performance or a child beams with pride when receiving a superior at Festival, we have achieved our goals. By fostering the arts, we improve the quality of life in all of our communities across the state.

As leaders of this organization, we achieve these goals by working together, communicating, providing clear instructions and administering the rules fairly and equitably for all. We must do this on the local level, the state level and ask our leaders on the national level to do the same for us. As individuals, we love music. As an organization, we share that love of music with others. We succeed as individuals and an organization when we work in harmony, sing each other's praises and **let every note be heard.**

NFMC Fall Session, Pittsburgh



Ann and Harold Kay, State Presidents Walk

Mississippi Board Member Report



By
Beth McAuley

It has been a whirlwind year for your Mississippi Board Member who also serves as NFMC Southeastern Region Vice President for 12 states and DC. What a great pleasure to host NFMC Vice President Carolyn Nelson and husband Gil in our home in Tupelo on April 22. They were met at the Memphis Airport by our sister Jimmie Walker. We drove to Columbus for the MFMC Convention where Carolyn was the honored national guest and banquet speaker. The weather was not very welcoming but The Columbus Music Study Club was and State President Ann Kay and Club President Linda Inmon had beautiful events and music planned. Dr. Jeremy

Owens of Blue Mountain College presented a wonderful piano recital. The student collegiate winners from Hattiesburg and Mary McKibben, District I Piano Camp winner played for us. At the conclusion of the convention we had to take refuge in the hotel because of the near-by tornado and wait until it was safe to travel to Tupelo. We were so glad to have the Nelsons in our state and sorry the whirlwind became a tornado. MFMC will long remember this meeting.

The Sixty-Second Southeastern Federation Weekend was held at The Brevard Music Center (BMC) in North Carolina, July 9-11. We planned the meeting agenda and worked with The Louisiana Federation of Music Clubs who hosted the events. NFMC Chairman Kay Hawthorne and Louisiana President Irene Vile were co-chairmen. The theme was Kismet and Mardi Gras. Carolyn Nelson was the honored national guest and loved her first visit to BMC. Frances Nelson from Jackson made her first visit to Brevard and also loved it. State President Ann Kay and husband Harold attended. Jimmie chauffeured us. It was our pleasure to give her a life

membership in NFMC. She knows many federation people and has decorated events at Federation weekend twice for Mississippi.

On Friday night members and guests had a late registration followed by a box supper on the porch of the alumni house. They attended the operetta "Die Fledermaus" by Johann Strauss. The next morning we conducted an informal session "Know the Past to Plan the Future". State Presidents were asked to tell about their state's contributions over 62 years of affiliation with BMC. They were to tell it in an entertaining way. We then talked about how and what our roll was with BMC today.

The Southeastern Region now has by-laws, officers, and a board that includes the State Presidents (or their representative). An endowment was established last year to fund a scholarship for a Southeastern Region student who is accepted by Brevard for summer study. The goal was to raise \$25,000 in five years. Our campaign strategy "Bucks for Brevard" was launched. Projects of plain note cards and a

Continued to Page 4

**Mississippi Federation
of Music Clubs
2010-2011 Officers**

President

Ann Kay
2538 Northplace Drive
Tupelo, MS 38804
Phone: 662 842 6902
Cell: 662 790 5416
annkay@comcast.net

Vice President

Debbie Barnes
3007 Tidewater Circle
Madison, MS 39110
Phone: 601 856 3697
debbie.barnes@earthlink.net

Recording Secretary

Sarah Mullen
4025 Hanging Moss Drive
Jackson, MS 39206
Phone: 601 291 7593
so.mullen@comcast.net

Treasurer

Cecil Fox, Jr.
P. O. Box 534
Canton, MS 39046
Phone: 601 407 1285
ccolefox@aol.com

Parliamentarian

Ruth Smith
1315 Simwood Place
Jackson, MS 39211
Phone: 601 981 0011
ruthsmith1@aol.com

Vice President District I

Linda Inmon
P. O. Box 5378
Columbus, MS 39704
662 329 4795
linmon379@msn.com

Vice President District II

Terri Donald
10011 Neshoba / Kemper Road
Philadelphia, MS 39350
601 650 0093 Home
601 416 4019 Cell

Vice President District III

Dr. Geraldine Roberts
2380 SCR 503
Raleigh, MS 39153
601 269 3391
groberts@bayspringstel.net

Vice President District IV

Patricia Breeland
147 Chantilly Drive
Madison, MS 39110
601 605 4964
pcbreland@bellsouth.net

Vice President District V

Betty Turner
405 East Jackson Street
Belzoni, MS 39038
662 247 3152
hturner@telepak.net

Vice President District VI

Dr. Jerri Lamar Kantack
1222 Clayton Avenue
Tupelo, MS 38804
662 841 1585
jkantack@bmc.edu



**NATIONAL FEDERATION OF MUSIC CLUBS 2010-2011
OFFICERS AND CHAIRMEN**

President

Lana M. Bailey (Mrs. Zuille)
3686 Russell Rd.
Woodbridge VA 22192-4912
Phone/fax: 703.590.4650
Email: ZBLB@Verizon.net

Vice President

Carolyn Nelson (Mrs. Gilbert)
1 2nd Street South #5-402
Fargo, ND 58103
Phone: 701.235.5161
Email: cnelson@nelsonnotes.com

Recording Secretary

Carol Langley (Mrs. Duane)
1203 Whispering Pines Ct.
St. Louis, MO 63146-4541
Phone: 314.878.2193
Email: CaroleLangley2@sbcglobal.net

Treasurer

Barbara Hildebrand (Mrs. William)
3034 Smith Lane
Franklin, TN 37069-6108
Phone/fax: 615.791.6098
Email: bharmonyhall@comcast.net

Vice President of Southeastern Region

Beth McAuley (Mrs. Malcolm)
2335 Mt. Vernon Rd.
Tupelo, MS 38804
Phone: 662.844.1304
Email: mdbrmcauley@comcast.net

Council of State Presidents Chairman

Starla Blair (Mrs. Terry)
902 E. Gaslight Dr.
Springfield, MO 65810
Phone: 417.887.1207
Email: tbwr1@swbell.net

**NFMC members serving
The National Federation of Music Clubs
Executive Committee:**

Beth McAuley

Ellis Duo Piano

Competition Committee:
Ruth Smith, Beth McAuley,
Frances Nelson

NFMC Photography Chairman:

Frances Nelson

NFMC Policy

Resolutions Committee:
Frances Nelson



**NATIONAL FEDERATION
OF MUSIC CLUBS
2010-2011 MISSISSIPPI ROSTER
American Music Division**

Parade of American Music Chairman
Debbie Bullock
1104 President Street, Tupelo, MS 38801
662.844.7674

American Women Composers Chairman
Debbie Bullock
1104 President Street, Tupelo, MS 38801
662.844.7674

Arts Division

Chamber Music Chairman
Carolyn Sturdivant
P.O. Box 86, Minter City, MS 38944
662.658.3325
cps47@bellsouth.net

Crusade for Strings Chairman
Carolyn Sturdivant
P.O. Box 86, Minter City, MS 38944
662.658.3325
cps47@bellsouth.net

Folk Music Chairman

Terri Donald
10011 Neshoba/Kemper Road, Philadelphia, MS 39350
601.650.0093
tdonald@neshoba.k12.ms.us
(only during school yr.)

International Music Relations Chairman
Angela Teasley
372 Glenfield Road Extension, Canton, MS 39046
601.859.3062
artmusic@yahoo.com

Music in Poetry Chairman

Margaret DeMerville
2309 Parkway, Tupelo, MS 38804
662.842.7913
mjdemerville@aol.com

Music Service in Community/Choral Music Chairman
Bettye Sledge
107 Laverne Street, Crystal Springs, MS 39059
601.892.5510
jamesjrslodge@bellsouth.net

Music in Schools and Colleges Chairman
Dr. Lawrence Goldman
1207 Wright Street, Greenwood, MS 38930
662.453.2852
lgoldman@allmail.net

Together We Sing Chairman

Frances Nelson
261 Northbay Drive, Madison, MS 39110
601.856.7787
fnelson1@comcast.net

Music Outreach Chairman

Ann Fox
472 Dinkins Street, Canton, MS 39046
601.859.1981

Sacred Music Chairman

Flo Aldridge
P.O. Box 2783, Tupelo, MS 38803
662.322.6094
floaldrige@yahoo.com

National Music Week Chairman

Beth McAuley
2335 Mt. Vernon Road, Tupelo, MS 38804
662.844.1304
mdbrmcauley@comcast.net

Continued on page 3

**MFMC Fall
Session
2010**



Registration
Josephine Bryan
President
MacDowell Music Club
of Jackson



Scholarship Winner
Caleb Foster Performs



Scholarship Winner
Dorothy Claire Glover Performs

NFMC BOARD MEETING ACTION

**ARTS DIVISION
UNIFORM DATE PROPOSAL
APPROVED**

The following date changes for reports will apply to Chamber Music, Crusade for Strings, International Music Relations, Music in Poetry, Music in Schools and Colleges, Music Service in the Community and Opera.

Local to State - Postmarked on or Before April 1
State to Regional - Postmarked on or before April 15
Regional to National - Postmarked on or before May 1
National to Div Chr Postmarked on or before May 15

Date changes **DO NOT** apply to National Music Week.

Calendar Of Club Reports Due Dates

- Check the forms to determine whether the due dates are for postmarking or receiving.
- State and regional chairmen should consult forms to determine for the due dates for reports to be sent to regional or national chairmen.
- Consult the Competition and Awards chart (CA 20-1) for the listing of due dates for applications.
- See *Junior Keynotes* and *Music Clubs Magazine* Goals and Methods for deadlines for submitting articles.

Due Dates	Form Number	Description of Form	Receiving Chairmen
February 1	AR 13-1	Natl. Music Week Essay Contest	to Regional Chairman
March 1	ME 5-2	Yearbooks	to National Chairman
March 1	AM 1-1	Parade of American Music	to Regional Chairman
March 1	AR 10-1	Music Outreach Club Report	to State Chairman
March 15	FI 3-2	Founders Day Report	to State Chairman
April 1	AR 14-1	Club Opera Report	to State Chairman
April 1	JR 17-4	Dance Club Report	to State Chairman
April 1	AR 7-1	Music in Schools and Colleges	to State Chairman
April 1	AR 2-1	Chamber Music Clubs Report	to State Chairman
April 1	AR 5-1	International Music Relations	to State Chairman
April 15	AR11-1	Sacred Music Report	to State Chairman
April 1	AR 3-1	Crusade for Strings Club Report	to State Chairman
April 15	AR 6-1	Music in Poetry Club Report	to Regional Chairman
May 1	AM 7	Folk Music Report	to National Chairman
May 1	FI 9-3	Annual Chapter PPA Report	to State Chairman
May 1	PR 3-1	Radio/Television Report	to Regional Chairman
May 1	AR 9-3	Together We Sing Club Report	to State Chairman
May 15	AD 2-1	Arts Advocacy Report	to State Chairman
May 25	AR 12-1	Nat. Music Week Club Reports	to State Chairman
End of Club Year	ME 7-1	Senior Club Reporting	to State Chairman
June 1	JR 1-1	Junior Club Rating Sheet	to National Chairman
June 1	ME 7-2	Senior Clubs State Reporting	to State President, NFMC HQ's, NFMC Chairman

Note: Send to Regional Chairman, or the National Chairman, a written report of any outstanding activity in a department or committee that could be used in a report at a National Meeting. Send reports at close of club year, latest by May 1.

**NFMC GUIDELINES FOR SENIOR CLUB
ACHIEVEMENT RECORD BOOKS**

1. COVER

- Should contain NFMC insignia, name of club, town and state
- Use NFMC insignia that is on NFMC website home page.

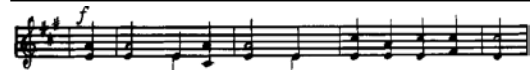
2. INFORMATION AND MATERIALS

- Index page placed in back of book with all pages numbered.
- List National, State, Club Officers and Members. (picture if available)
- Club and public programs including radio and tv.
 - All activities related to State and NFMC programs and projects. (American Music, Founder's Day, National Music Week, etc.)
 - Correlated pictures and/or newspaper clippings related to each. (Clippings must include name and date of publication)
- Conventions: State, National, or Brevard—Official Programs, Publicity, etc.
- Awards, Rating Sheet (showing points earned), copy of club yearbook. State and National Publications and any material of historic value.

3. JUDGING

- Neatness and content
- Historic value of contents
- Continuity of arrangement
- No duplication of materials
- Originality

An Achievement Book is a historical record and it should represent all the important activities of a Federated Music Club over a one-year period.



Junior News State Junior Counselor Report for the 2010 Junior Convention

The 94th Annual Mississippi Federation of Music Clubs Junior Convention was held in Canton MS, on May 8, 2010. The Junior Convention was rescheduled from April 24th in Columbus, Mississippi due to severe tornado forming weather that day. We had nineteen junior members, eight junior counselors and twelve guests to register for this event. The attendance may have been slightly higher since there were a few people who did not sign in. After the scheduled meetings and auditions of the morning, the convention began at 10 a.m. We had two elected junior officers to attend and conduct the meeting for this event. Cory Yates, President and Melissa Johnson, Treasurer.

Later in the convention we had the presentation of the Piano Discoveries Scholarship winners. This year's award went to Dorothy Claire Glover of Junior MacDowell/Junior Pacesetter and Caleb Foster McDowell II. The alternate selected was Sallie Lin of Vicksburg Junior Matinee.

The following junior members were elected as the new State Junior Officers for the 2010-2011 session. They are as follows:

President, Melissa Johnson
V. President, Dorothy Claire Glover
Secretary, Aalaap Desai
Treasurer, Chelly Goodwin
Chaplain, Amanda May

Other officer positions that were elected earlier that morning were the Honor Society. The Honor Society was led by Mrs. Mary Jo Dacus and the following junior members were elected to the following positions.

Honor Society Officers:
President, Dorothy Claire Glover
Vice President, Aalaap Desai
Secretary, Krishna Desai
Treasurer, Jason Snyder

After a ten minute break we reconvened for the second half of the convention with words of encouragement and inspiration from our State President, Mrs. Ann Kay. We then followed up with awards given to Junior Composer winners. Our highlight of the afternoon was hearing a variety of American composer music and International music being performed by the Discovery Scholarship finalists, two Mississippi College Music Camp winners and ten junior members who had received 5 or more consecutive superiors.

The program concluded with presentation of certificates for Rating Sheets. Ribbons were presented for rating sheet points. Presentation and Awards were given for Yearbook, Club Achievement Record Book and Individual Achievement Record Book. The awards were judged by Mrs. Helen Reed and presented by Ms. Debbie Barnes. We were adjourned by our new Junior President Melissa Johnson and presiding officers.

Respectfully submitted,
Melinda Porter
State Junior Counselor, Melinda Porter,
Major Scales Studio,
5643 Highway18 West, Suite J, Jackson, MS 39209
601.922.0110 (office), majorscales@aol.com



Junior Convention 2010

L to R Carolina Whitfield-Smith,
Festival Chairman, Melinda Porter,
Junior Counselor



Students Perform

2010 Festival Report

9 Festivals were held in Mississippi, with Junior and Adult entrants from 70 clubs. There were 1327 entries in 19 events, the most popular still:

Piano Solo	696
Musicianship Theory	348
Hymn Playing	127
Violin Solo	62

The other events were Lynn Freeman Olson Piano Solo (a newer event dedicated to the composer), Piano Concerto and Duet, Sight Playing, Vocal Solo and Duet (Art Song and Musical Theatre), Patriotic/Folk, Violin, Viola, and Cello Solo, Concerto and Ensemble, Fiddling, and Guitar. Many other events are available; please consult the 2011-2012-2013 Festival Bulletin (available through NFMC).

As you might guess, record-keeping all this is quite important and complicated! We also track Consecutive Superiors (of the 1138 Superiors, 653 of those were multi-year, 1 a 12-Year!!!). In eager anticipation of NFMC's upgrade to a national online festival application, I am working to build an online centralized database for our state.

Many thanks to our wonderful District Chairmen and the teachers and clubs who assist them. Welcome new chairmen Lorrie Stringer (II-B), Susan Fairchild (III), Jerri Lamar Kantack (VI-A&B) and Erin Wilson (VIII). I urge adult and junior clubs to assist their

district's chairman on festival day. Every volunteer counts!

Let's make 2011 another great festival year!

Carolina Whitfield-Smith

Festival Chairman: Carolina Whitfield-Smith, 2349 Wild Valley Drive, Jackson, MS 39211-6222, 601.981.0819, carolina@whitfield-smith.com.

Festival Cup Program Report 2009-2010
Junior Counselors from 7 out of 9 Districts participated in the Festival Cup Program.

The following cups were awarded
1st cup = 167 • 2nd cup = 32 • 3rd cup = 8
• 4th cup = 1

The Festival Cup form is the same as last year. It can be downloaded from the NFMC website. I will also do a mail out. The fee for each event is still \$5. The deadline for returning the form to me is no later than January 31, 2011.

Festival Cup Chairman: Terri Donald, 10011 Neshoba/Kemper Road, Philadelphia, MS 39350, 601.416.4019, tdonald@neshoba.k12.ms.us

Junior Keynotes Newsgatherer
Susan Walker
115 Country Hills Drive
Terry, MS 39170
601.372.0421 home
601.896.3152 cell

2010-2011 Mississippi Roster

Continued from Page 2

National Music Week Essay Contest Chairman
Beth McAuley
2335 Mt. Vernon Road, Tupelo, MS 38804
662.844.1304
mdbrmcauley@comcast.net

Opera Chairman
Betty Turner
405 East Jackson Street, Belzoni, MS 39038
662.247.3152
hturner@telepak.net

Finance Division

Founders' Day Chairman
Cecil Fox, Jr.
P.O. Box 534, Canton, MS 39046
601.407.1285
ccolefox@aol.com

Insignia Chairman
Nancy Box
2301 St. Andrews Drive, Belden, MS 38826
662.840.1866

Memorial and Recognition Chairman
Josephine Bryan
228 Park Lane Place, Jackson, MS 39211
601.956.7482

Past Presidents Assembly Chairman
Dr. Darwin Brooks
115 Locust Hill Road, Belden, MS 38826
662.842.0673
dbrooks@network-one.com

Public Relations Division

Public Relations Chairman
Patricia Breeland
147 Chantilly Drive, Madison, MS 39110
601.956.7482
pcbreeand@bellsouth.net

Competitions and Awards Division

Competitions and Awards Chairman
Ann Fox
472 Dinkins Street, Canton, MS 39046
601.859.1981

Veteran's Awards Chairman
Margaret DeMerville
2309 Parkway, Tupelo, MS 38804
662.842.7913
mjdemerville@aol.com

Terry Swindol
204 Bluebird Drive, Tupelo, MS 38804
662.842.1198
swindol@bellsouth.net

Summer Music Centers Awards Chairman
Ann Fox
472 Dinkins Street, Canton, MS 39046
601.859.1981

Young Artist Chairman
Frances Nelson
261 Northbay Drive, Madison, MS 39110
601.856.7787
fnelson1@comcast.net

Membership and Education Division

Membership Extension Chairman
Josephine Bryan
228 Park Lane Place, Jackson, MS 39211
601.956.7482

Sr. Club Reporting and Evaluation Chairman
Doty Jones
602 Nicholson, Greenwood, MS 38930
662.453.9141

Yearbook and Achievement Record Chairman
Betty Turner
405 East Jackson Street, Belzoni, MS 39038
662.247.3152

Student/Collegiate Division

Student/Collegiate Auditions Chairman
Frances Nelson
261 Northbay Drive, Madison, MS 39110
601.856.7787
fnelson1@comcast.net

Junior Division

Junior Counselor
Melinda Porter
Major Scales Studio, 5643 Highway18 West, Suite J,
Jackson, MS 39209
601.922.0110 (office)
majorscales@aol.com

Club Record/Achievement Record Chairman
Helen Reed
103 Laura Lane, Clinton, MS 39056
601.925.1899
hreed1210@juno.com

Festival Chairman
Carolina Whitfield-Smith
2349 Wild Valley Drive, Jackson, MS 39211-6222
601.981.0819
carolina@whitfield-smith.com

Junior Keynotes Newsgatherer
Susan Walker
115 Country Hills Drive, Terry, MS 39170
601.372.0421 (home) 601.896.3152 (cell)
swpianist@aol.com

District I Festival Co-Chairman

Eloise Crossley
37 Forest Glen, Columbus, MS 39705
662.328.3349

District I Festival Co-Chairman

Marilyn Fields
2602 Puckett Parkway, Columbus, MS 39705
662.329.3485
mfields@heritagepatriots.com

District II A Festival Chairman

Sue Lewis
529 Henley Avenue, Philadelphia, MS 39350
601.416.1392

District II B Festival Co-Chairman

Charlotte Mason
4928 6th Place, Meridian, MS 39305
601.483.2835

District II B Festival Co-Chairman

Lorrie Stringer
6130 16th Ave, Meridian, MS 39305
601.917.2214

District III Festival Chairman

Susan Fairchild
P O Box 392, Purvis, MS 39475
601.310.2946

District IV A Festival Chairman

Mary Jo Dacus
545 S. Kathy Circle, Canton, MS 39046
601.859.2386 (phone) 601.859.6011 (fax)
hdacus@bellsouth.net

District IV B Festival Chairman

Carolina Whitfield-Smith
2349 Wild Valley Drive, Jackson, MS 39211-6222
601.981.0819
carolina@whitfield-smith.com

District V Festival Chairman

Betty Turner
405 East Jackson Street, Belzoni, MS 39038
662.247.3152
hturner@telepak.net

District VI A & B Festival Chairman
Jerri Lamar Kantack
1222 Clayton Avenue, Tupelo, MS 38804
662.841.1585
jkantack@bmc.edu

District VI C Festival Chairman
Mrs. Ginger Stockton
6612 N. Shiloh Road, Corinth, MS 38834
662.287.7344 (home) 662.286.2821 (work)
gingers@e1w.com

District VIII Festival Chairman

Erin Wilson
22 Dronet Road, Carriere, MS 39426
985.774.9815
erwilson83@gmail.com

Festival Cup Chairman

Terri Donald
10011 Neshoba/Kemper Road,
Philadelphia, MS 39350
601.416.4019
tdonald@neshoba.k12.ms.us

**Festival Improvisation Chairman,
Junior Composers Chairman and
Lynn Freeman Olson Composition Awards Chairman**
Annette Joe

620 Wendover Drive, Ridgeland, MS 39157
601.853.6867
edwardjoe@bellsouth.net

Dance Chairman

Vixi Shaw
111 Lakeshore Point K203, Brandon, MS 39047
601.405.2829
pixivix@aol.com

Junior Music in Poetry Award Chairman

Margaret DeMerville
2309 Parkway, Tupelo, MS 38804
662.842.7913
mjdemerville@aol.com

Music for the Blind Chairman

Mary Jo Dacus
545 South Kathy Circle, Canton, MS 39046
601.859.2386
hdacus@bellsouth.net

Administration Division

Arts Advocacy Chairman - formerly Legislation-
Frances Nelson
261 Northbay Drive, Madison, MS 39110
601.856.7787
fnelson1@comcast.net

Historian

Harold Dacus
545 South Kathy Circle, Canton, MS 39046
601.859.2386
hdacus@bellsouth.net

State Chairmen



L to R Dr. Darwin Brooks, Florence Aldridge,
Terry Swindol

Mississippi Federation of Music Clubs

2010-2011 Club Presidents

Belzoni Music Lover's Club

Sherrie Childs
253 Tram Road
Isola, MS 38754
662 836 8580 cell
swainlaw@techinfo.com

Canton Music Study Club

Patricia Breeland
147 Chantilly Drive
Madison, MS 39110
601 605 4966
pcbreeand@bellsouth.net

Chaminade Music Club of Jackson

Ouida Bass Holland
4124 Oak Ridge Drive
Jackson, MS 39216
601 842 2647 Cell
hollando@gosaints.org

Columbus Music Study Club

Linda Inmon
P. O. Box 5378
Columbus, MS 39704
662 329 4795
linmon379@msn.com

Corinth Music Club

Cathy Alexander
121 Quail Run Road
Corinth, MS 38834
662 287 8379
2coolalex@bellsouth.net

Crescendo Senior Music Club

Mittie Montgomery
151 Old Airport Road
Pontotoc, MS 38863
662 419 1672

Fortnightly Musicale of Tupelo

Terry Swindol
204 Bluebird Drive
Tupelo, MS 38804
662 842 1198
swindol@bellsouth.net

Hattiesburg Music Teachers League

Dr. Ellen Elder
William Carey University
Winters School of Music
498 Tuscan Avenue
Hattiesburg, MS 39401
ellen.elder@wmcarey.edu

Lydian Music Club of Philadelphia

Sue Lewis
529 Henley Avenue
Philadelphia, MS 39350
601 416 1392

MacDowell Music Club of Crystal Springs

Margaret Druetta
2020 Henry Road
Crystal Springs, MS 39059
601 892 5963
mkd2020@bellsouth.net

MacDowell Music Club of Jackson

Josephine Bryan, Co-President
228 Parklane Place
Jackson, MS 39211
601 956 7482

Kay Valentine, Co-President

216 W. Virginia
Clinton, MS 39056
601 924 2951
kkvalentine@yahoo.com

Matinee Musicale of Greenwood

Cathy Jennings, Co-President
207 Riverside Drive
Greenwood, MS 38930
662 453 3499
662 459 2633

Flolane Walker, Co-President

1301 Magnolia Street
Greenwood, MS 38930
662 453 6268

Meridian Music Society

Charlotte Mason
4928 6th Place
Meridian, MS 39305
601 483 2835

Metro Music Teachers League

Joy Yates
503 Enchanted Drive
Yazoo City, MS 39194

Sinfonia Music Club of Simpson County

Brenda Jones
211 West Maud Avenue
Mendenhall, MS 39114
601 847 1823
brendamjones@bellsouth.net

Board Report *Continued from Page 1*

holiday card with our logo Buck with a Christmas Wreath were designed by NFMC Treasurer Barbara Hildebrand and committee and were ready to sell in Pittsburgh. Thank you MFMC for sending the beautiful basket that was auctioned to help pay for setting up these projects. Louisiana had a magical banquet. Carolyn tied her talk in with the Kismet theme by showing how many ways through the years the operetta had been filmed and staged but had kept the same story line, much like NFMC has done through the years with its goals and mission. The Louisiana reception honored Carolyn and Young Artist James Cockman III who played the Grieg Piano Concerto in A minor for the Hinda Honigman Memorial Concert on Sunday afternoon. Joseph Kalichstein was the pianist who performed on Saturday night, with Keith Lockhart conducting the symphony for both.

After being in a whirlwind of gate changes at the Memphis Airport we, Jimmie, Ann and Harold Kay were off to Pittsburgh for the NFMC Fall Session "Building Bridges with Music". Ruth Smith and daughter Diane Smith of Jackson arrived a little later. Frances Nelson and MFMC Treasurer Cecil Fox came the next day. We gave the Southeastern Region Vice President's report at the opening exercises and had much to brag about from the states. We were so proud to tell about the "Bucks for Brevard" successful campaign that raised \$17,356 in one year for the newly established regional endowment scholarship. We planned the Southeastern Region luncheon and had the State Presidents tell what their states had contributed to the "Bucks for Brevard" campaign by posing as bucks that were chased throughout the state by you elite hunters. The buck's antlers were beautifully decorated by assistant Jimmie and each buck was encouraged to embellish the skit. Ann Kay did a great job for Mississippi and proudly reported that our state found \$2,220 Bucks for Brevard and had some elite hunters. We encourage each Senior Club member to find one buck and have club treasurer send collectively to the state treasurer who will send to SE Region treasurer Dr. Mabry Miller. Individual contributions may be sent directly to Dr. Miller, 1606 Big Cove Rd. SE, Huntsville, AL 35801-2116. ("Bucks for Brevard")

We attended executive officer meetings, NFMC board, and committee meetings. Saturday night our lovely State President Ann Kay, escorted by husband Harold, marched in the Parade of Presidents. The banquet was in their honor.

The Rose Fay Thomas Luncheon was very special this year. Our own Ruth Smith serves as Vice Chairman and was called upon to conduct the ceremony for inducting the new Rose Fay Thomas fellows into the society. Mississippi is proud to have two new members, President Ann Kay of Tupelo and Diane Smith of Jackson. Ruth surprised daughter Diane with this gift. We honored Jimmie with this special gift also. It was very special to Ann, Diane, and Jimmie that Miss Ruth presented them their certificate and medallion. A one time donation of \$1,000 is made to the NFMC endowment to become a RFT fellow.

There was so much beautiful music, we don't have space to tell about it but we were privileged to hear Daniel Siegel, baritone sing. Daniel is the 2009 YA winner and will be the artist for The Francis Christmann Carnegie Hall debut recital which is November 6 in New York. We have our plane tickets and will be attending with family and friends. Plan to go and spend a few extra days in The Big A.

The Ellis competition will be held at Converse College in Spartanburg, SC, on April 1-2, 2011. We plan to attend and hope other committee members from Mississippi will be there also. We went with Ruth Smith to the last biennial when Drs. Jeffery and Karen Savage from Washington State were declared winners.

You will see the national dues increases for each Senior club member to \$3.00 and clubs with 10 members or less will be paying \$30. This is still a tremendous bargain for all that NFMC has to offer. The Arts division has given date deadlines that consolidate some of these reports. Your President has this information and will relay this to you.

The Standing Rules Board recommended that every state update their by-laws to reflect the national dues increases and minimum club member dues increase along with increased state dues.

We have learned so much from the states in the Southeastern Region and it has been an honor and privilege to serve as the Vice President of this active region as well as The Mississippi Board Representative. Even with health issues, NFMC still remains a top priority in our life. With the loving support and help of many angels and God's good grace, we were able to work with you to accomplish many NFMC music goals. Thank you for your work and dedication.

MFMC love and appreciation,
Beth

2010 MFMC Convention, Columbus Honoring Past Presidents



L to R Ann Fox, Frances Nelson, Doty Jones, Darwin Brooks, Lee Ann Powell, Betty Turner, Beth McAuley, Ruth Smith



National Guest and District I VP

L to R Carolyn Nelson, Linda Inmon

Student Collegiate Winners Perform



L to R Tim Dail, President Ann Kay, Bo Mi Kim, Thomas Jenkins

Mississippi Skit at Brevard



L to R Frances Nelson, Beth McAuley, Ann Kay, Jimmie Walker

2010 NFMC Fall Session, Pittsburgh



Mississippi Attendees
L to R Diane Smith, Ruth Smith, Beth McAuley, Ann Kay, Frances Nelson, Cecil Fox, Jr.

MFMC Fellows

Charles Treas	Anne S. Fox	Mary Grace Johnson (deceased)
Beth McAuley	Ann F. Fox	
Ruth Smith	Sarah Flanagan	For information contact Cecil Fox, Jr.
Cecil Fox, Jr.	Patti Sullivan	

MFMC \$52 CLUB 2010 - 2011

Terri Donald	Frances Nelson	Mary Jo and Harold Dacus
Doty Jones	Ruth Smith	Betty Sledge
Betty Malone	Patricia Breeland	Ann Kay
Lee Ann Powell	Annette Joe	Cecil Fox, Jr.
Debbie Barnes	Sarah Flanagan	
Josephine Bryan	Beth McAuley	

The \$52 Club was established as an easy method to increase our MFMC Scholarship Fund. The concept is to donate \$1.00 per week to MFMC. At that time the idea was to give up one cup of coffee or a soft drink per week. Most people find it easier to just write one check for \$52.00.

I encourage you to join these sixteen who have already contributed for 2010 - 11 and to invite every member of every club to also donate. Imagine what we could give away in scholarships in a few years if everyone donated just \$1.00 per week.

You may mail your check made payable to MFMC Scholarship Fund to me at P. O. Box 534, Canton, MS 39046, or you may give it to your club treasurer, and it can be included with the club's report to the treasurer.

All donations to MFMC are fully tax deductible.
Cecil Fox, Jr. - Chairman, \$52 Club

MFMC sent six students to the Music Camp at Mississippi College, and two to Piano Discoveries Camp at the University of Mississippi.

MUSIC CAMP AT MISSISSIPPI COLLEGE

DISTRICT I
Mary McKibben
Mathiston

DISTRICT II B
Tony Padilla
Meridian

DISTRICT III
Jordan Broughton
Oakvale

DISTRICT IV A
Christa Morgan
Madison

DISTRICT IV B
Callie Tullos
Jackson

DISTRICT VI C
John Mark Dodd
Corinth

PIANO DISCOVERIES CAMP University of Mississippi

DISTRICT I
Caleb Foster
Sturgis

DISTRICT III
Dorothy Claire Glover
Brandon

For information concerning new Advanced Summer Music Center Scholarship for Juniors, contact: Ann Fox 472 Dinkins Street, Canton, MS 39046, 601 859 1981

